

SPECIFICHE

Monocomando a bacinella con bocca a cascata

Cromo

Scarico 1 1/4" push

Flessibili inox ø 3/8"

Regolatore dinamico di portata

Imballo: 56,5 x 29 x 7,1 cm / 0,01163 m³ / 2,98 kg

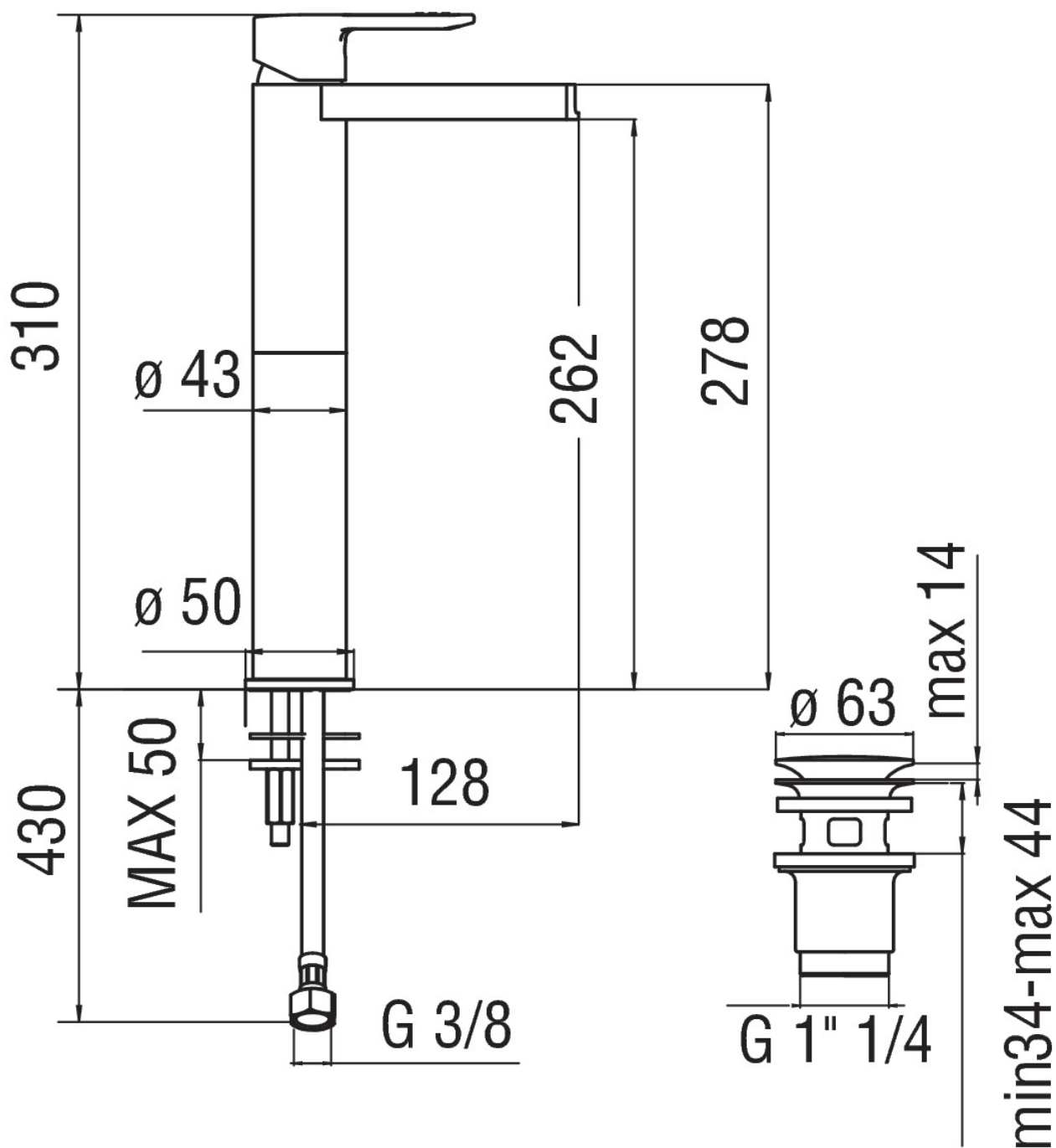
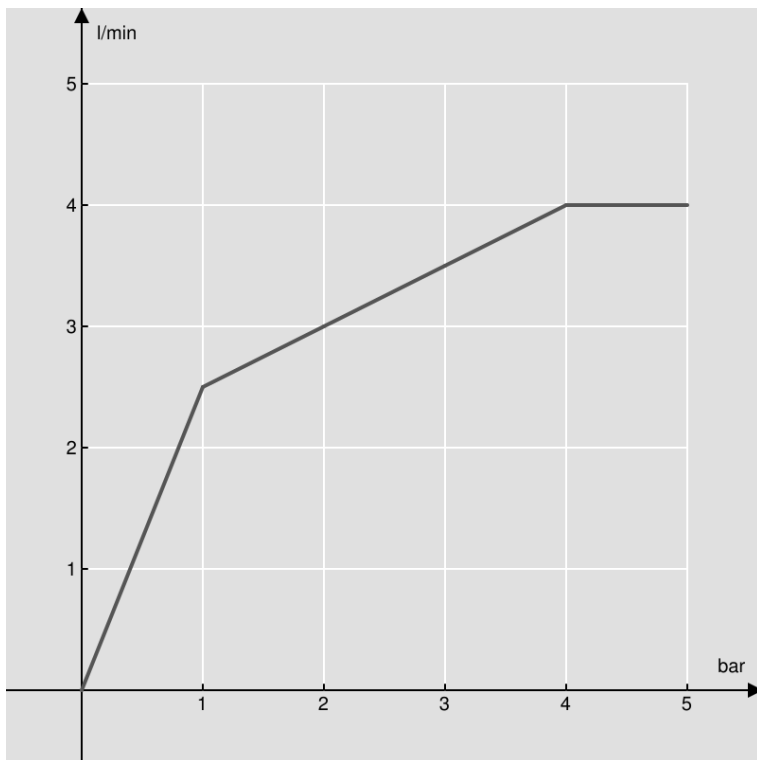
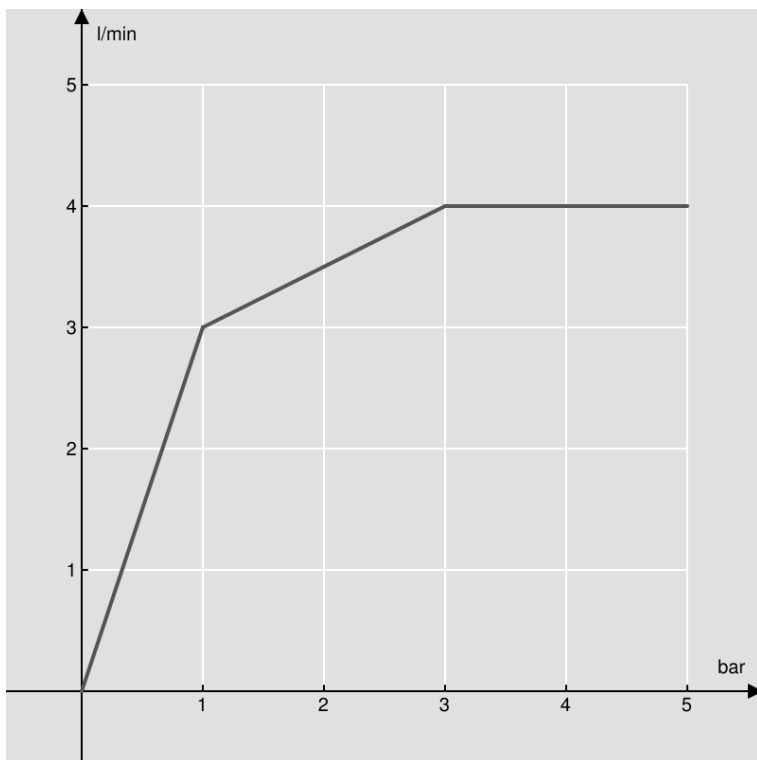


DIAGRAMMA DI PORTATA: ACQUA CALDA/FREDDA



— Bocca a cascata

DIAGRAMMA DI PORTATA: ACQUA MISCELATA



— Bocca a cascata